

IBM Tivoli Enterprise Console to Netcool/OMNIBus Migration Service

Overview

As part of IBM's network management platform evolution, Tivoli Enterprise Console (TEC) customers are being encouraged to move to IBM's Netcool/OMNIBus platform, featuring a superior rules engine. To minimize impact on your business, consultants from Eirteic Migration Services are available worldwide to help you migrate from TEC to Netcool/OMNIBus. Our experts can tailor a conversion plan to meet your needs, while ensuring that the conversion goes smoothly, ensuring quality, accuracy and rapid time to market. Our consultants are seasoned service professionals with years of experience in migrating IBM/Tivoli Netcool platforms around the globe.

Our migration service allows you to continue focusing on your day-to-day responsibilities while our highly skilled consultants apply their global expertise to complete platform migrations for your organization. Our staff will:

- Align the migration with your strategy and operational needs while employing best practices and methodologies
- Expedite your migration timetable based on real-world expertise
- Perform a comprehensive environmental assessment
- Deliver a post-migration functionality check to ensure all changes meet acceptability standards and that your environment is fully operational

Project Scope

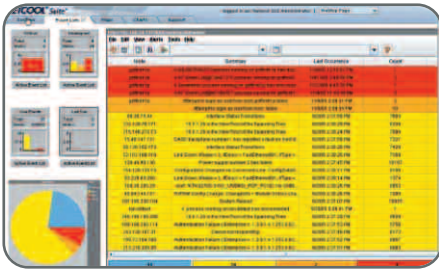
The platform migration work occurs in two phases. The first phase begins with a comprehensive assessment and migration plan. Eirteic consultants will identify resources that have been discovered and are currently managed in Tivoli Enterprise Console. This data is collected, analyzed, and documented in context of your business strategy. The migration is then planned, which includes definition of project parameters, resource allocation, and identification of best practices and methodologies to be used to ensure an efficient migration.

The second phase of the project implements the plan by deploying and configuring Netcool/OMNIBus software, migrating data, and validating that functionality is operational. Eirteic consultants will import and configure Netcool/OMNIBus software to mirror your TEC policies. They will also configure advanced root cause features to maximize IT staff efficiency.

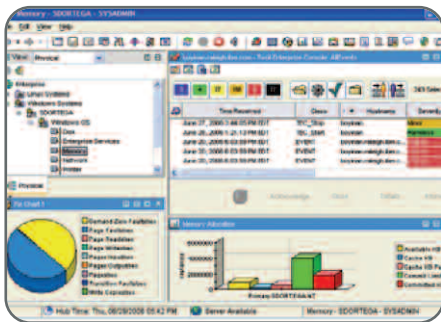
ACHIEVE MAXIMUM EFFICIENCY for your management system with Eirteic Consulting Migration Services. Eirteic is uniquely trained and qualified to implement solutions designed to enhance your business and maximize your investment in IBM technology.

BENEFITS

- Rely on Eirteic experts to future-proof your platform
- Fully realize the power and features of your new platform
- Take advantage of advanced management features
- Increase IT efficiency and scalability of existing personnel
- Leverage ITIL best practices and procedures



Future-proof your management platform with a migration to IBM Netcool/OMNIBus



Migrate off of Tivoli Enterprise Console to leverage new features in Netcool/OMNibus

Deliverables

- A platform migration assessment and plan that details deliverables, timetable for action, and allocation of resources
- Installation of your Netcool/OMNibus software
- A migration report outlining work completed and recommendations for ongoing support, and future enhancements

Related Services

Additional Eirteic services are available to help you get the most from your new Netcool/Precision platform:

- Technical Support—includes Basic, Premier, Premier Plus, and Custom
- Training—ask us about on and off-site Netcool training services

About Eirteic Consulting

Since its inception in 2000, Eirteic Consulting has been dedicated to providing quality OSS and ITSM solutions. It has a proven track record in delivering solutions to the telecommunications, service provider and enterprise marketplace. With headquarters in Ireland, Eirteic Consulting has offices in the US, Europe, South Africa, Australia and is highly active in the global marketplace; Eirteic Consulting has worked with customers in over 20 countries consistently delivering best of breed OSS and ITSM deployments. Its consultants have accumulated vast knowledge of the OSS and ITSM spaces as a result of this global footprint and are accredited to the highest levels required in the software tools that the company offers. Eirteic Consulting provides consultancy, integration, training and support for the most valuable network tools available to operators today.



Your Partner for Superior Management Solutions